

MINDEO



1D

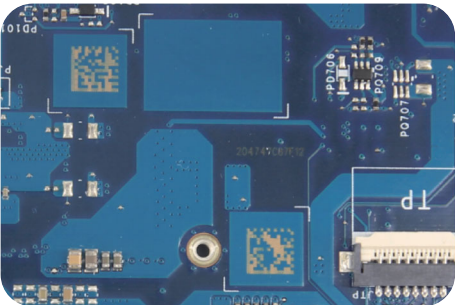
2D



MD7919 Hand-held Image Scanner

Features

- 1 Extraordinary DPM decoding ability
- 2 Excellent capability of scanning extremely density barcodes
- 3 Stylish and ergonomic design



Physical				
Dimensions (L×W×H)	87 mm × 64.5 mm × 167 mm			
Weight	138 g (without cable)			
Cable	Straight 2.0 m			
Connector Type	RJ-45 phone jack connector			
Case Material	PC+TPU			
Exit Window Material	Tempered glass			
Host System Interfaces	RS-232, USB Keyboard, USB virtual COM			
Indicator Interface	Beeper, LED, Vibrator (optional)			
Trigger Mode	Hand-held, Auto-detection			
Programming Method	Scanning special barcodes in sequence			
Firmware Upgrade	Online			
Electrical				
Input Voltage	5.0 ± 0.25 VDC			
Current	Standby: 160 mA; Working: 350 mA (max: 500 mA)			
Performance				
Image Size	1280 × 1024 pixels			
Light Source	Illumination: White LED, Red LED(5700K); Aiming: 525 nm peak wavelength(green LED)			
Field of View	SR, HD: Horizontal: 40°, vertical: 34° XD: Horizontal: 33°, vertical: 28°			
Scan Angle	±70°, ±75°, 360° (skew, pitch, roll)			
Print Contrast	20% minimum reflectance difference			
Decode Capabilities	All common 1D/2D barcodes			
Minimum Resolution	1D: 3 mil			
Decoding Depth		SR	HD	XD
	3 mil Code 39 (3 chars)	\	30mm - 60mm	20mm - 70mm
	5 mil Code 39 (3 chars)	45mm - 140mm	15mm – 130mm	5mm – 100mm
	13 mil UPC (6 chars)	0mm – 390mm	0mm - 330mm	0mm - 180mm
	20 mil Code 39 (1 char)	15mm – 610mm	15mm - 490mm	30mm - 260mm
	5mil QR (40 chars) :	\	25mm – 70mm	20mm – 70mm
	6.7 mil PDF417 (20 chars)	35mm – 150mm	10mm - 135mm	5mm - 105mm
	10 mil QR (20 chars)	35mm – 190mm	5mm - 180mm	5mm - 120mm
	20 mil QR (20 chars)	5mm – 420mm	5mm - 370mm	5mm - 190mm
Environmental				
Temperature	Operating: -10°C to 50°C (14°F to 122°F); Storage: -20°C to 70°C (-4°F to 158°F)			
Humidity	5% to 95% (non-condensing)			
Safety	EMC: EN55032, EN55035			
	Electrical Safety: EN62368-1			
	Photobiological Safety: EN62471:2008			
	Illumination: 0~100,000 LUX			
	Protection Class: IP52			
	Drop Resistance: Designed to withstand multiple drops at 2.0 m to concrete			

[Notice]: Specifications are subject to change without notice.

