



1D 2D

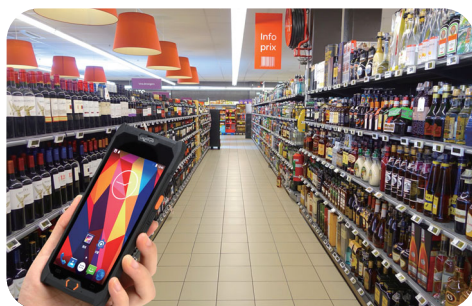


ME5066

1D/2D Barcode Image Engine(Software decode)

Features

- 1 Supports the MIPI interface
- 2 Ultra-Slim Software decoder, the height is only 6.8 mm
- 3 Double photography, ultra deep field fast reading
- 4 Supports multiple platforms such as Qualcomm(SM6115) and MTK(MT6762), and multiple systems such as Android 11
- 5 Soft white auxiliary lighting and green aiming cursor deliver agreeable experience



PHYSICAL CHARACTERISTICS

Dimensions	H × W × D: 6.8 mm × 23.5 mm × 16.2 mm
Weight	3.5 g
Interface	MIPI
Scan Mode	Command, Level
Cable	34 Pin FPC

ELECTRICAL CHARACTERISTICS

Input Voltage	3.3 ± 5% VDC
Current	VIN_3V3_IMGR (Average)
	Scanning: 84mA, Standby: 27mA
	VIN_3V3_LED (Average)
	Scanning: 388mA, Standby: 353μA

PERFORMANCE CHARACTERISTICS

Illumination LED	White LED	
Aiming LED	Green LED, wavelength: 525 nm	
Image Size	1280×1024 pixels	
Field of View	Sensor 1: Horizontal: 48°, vertical: 41° Sensor 2: Horizontal: 26°, vertical: 22°	
Scanning Angle	±70°, ±75°, 360° (Skew, Pitch, Roll)	
Print Contrast	20% minimum reflectance difference	
Minimum Resolution	1D (Code 39): 3 mil	
Decoding Capability	All common 1D/2D paper barcodes and mobile barcodes	
Decoding Depth	3 mil Code 39 (3 chars)	50 – 100 mm
	5 mil Code 39 (3 chars)	38 – 250 mm
	10 mil Code 39 (3 chars)	25 – 480 mm
	13 mil UPC (6 chars)	25 – 630 mm
	20 mil Code 39 (1 char)	30 – 880 mm
	10 mil QR (20 chars)	30 – 340 mm
	10 mil DM (20 chars)	30 – 330 mm
	20 mil QR (150 chars)	35 – 600 mm

ENVIRONMENTAL CHARACTERISTICS

Temperature	Operating: -20°C to 50°C (-13°F to 122°F) Storage: -40°C to 85°C (-40°F to 185°F)
Humidity	5% to 95% (non-condensing)
Mechanical Vibration	IEC60068-2-6
	Un-powered engine withstands a random vibration along each of the X, Y and Z axes for a period of one hour per axis, define as follows:
	20 to 80 Hz Ramp up to 0.04 G2/Hz at the rate of 3 dB/oct
	80 to 350 Hz 0.04G2/Hz
Mechanical Shock	350 Hz to 2000 Hz Ramp down at the rate of 3 dB/oct
	IEC60068-2-27
	Shock pulse: 0.5 ms, Maximal acceleration: 1500 G, Shock direction & time: ±X-axis, ±Y-axis, ±Z-axis, 3 times for each direction, total of 18 times.
Safety	EMC: EN55032, EN55035 Electrical Safety: EN62368 Photobiological Safety: EN62471:2008 RF Immunity: IEC61000-4-3, 10 V/m Artificial Light Immunity: 100,000 Lux

[Notice]: Specifications are subject to change without notice.