

Flash Utility V3.0.1 User Manual

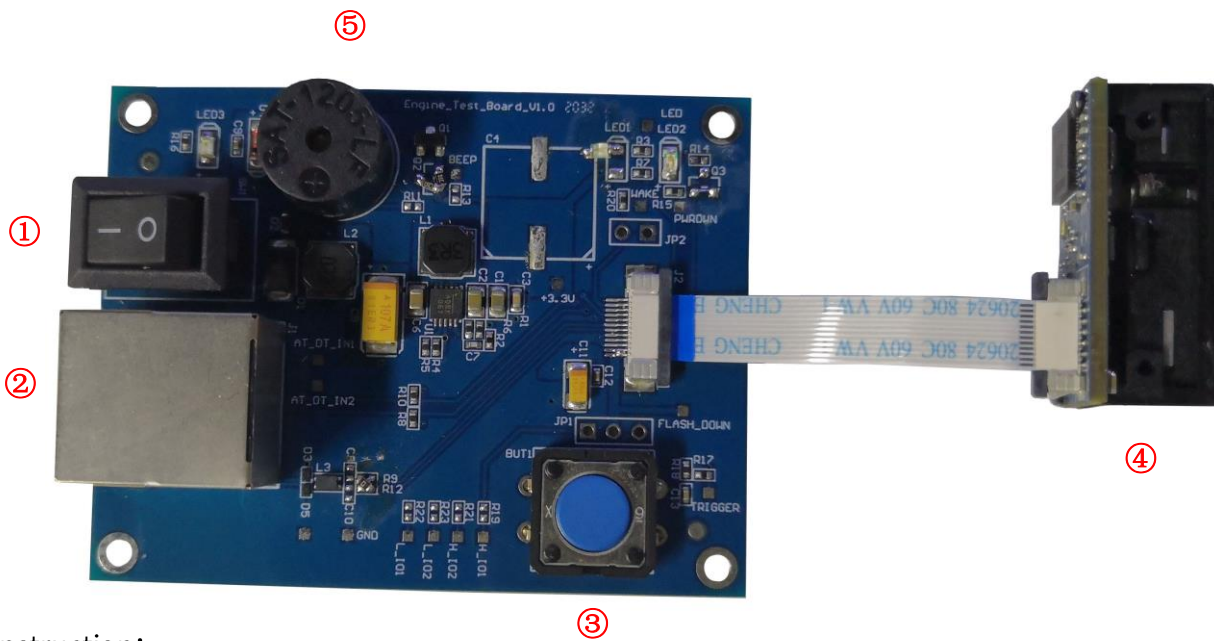
1 Notice

- 1) Please compress the *.bin file by compression tools, such as WinZip or WinRAR, for email attachment. Since some email servers will block the *.bin file attached.
- 2) The following progress keeps the same for the higher version firmware or utility, unless a further user manual is provided.

2 Configurations

Hardware	A computer	Windows XP/7/10, 5MB Free Space, USB Port, RS232 Port
	A scan engine	
	An engine test board	
	A USB/RS232 cable	
Software	<Flash Utility> folder	Upgrade software
	.bin file	Firmware upgrade file for scanner

3 Parts of the engine test board



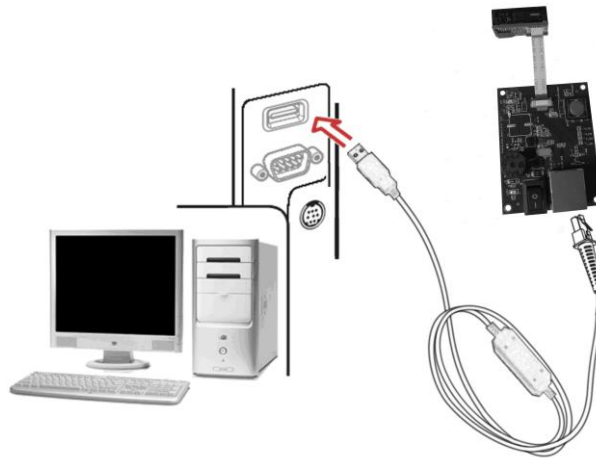
Instruction:

- ①: Power switch
- ②: Interface (cable) socket
- ③: Scan button
- ④: Scan engine
- ⑤: Beeper

4 Start upgraded

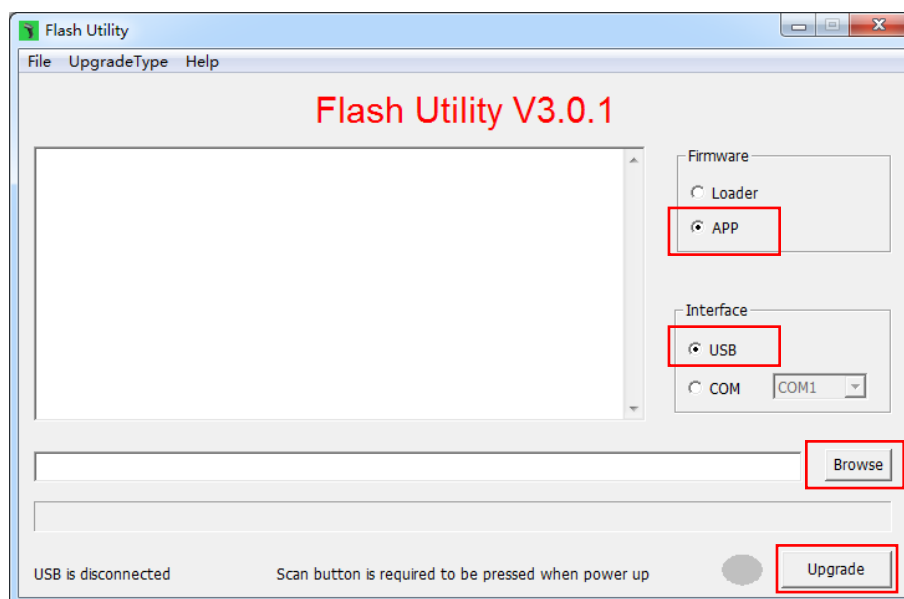
4-1 Steps to upgrade firmware by USB cable

Step 1: Connect the engine test board to the PC host by USB cable. As shown below.



Step 2: Keep the scan button being pressed, and power on the engine test board. The scan engine will beep once and the green LED of the engine test board will turn on to indicate entering on the firmware upgrade status, and then release the scan button.

Step 3: Run the Flash Utility.exe, as shown below.



Step 4: [Firmware] choose “APP” , [Interface] choose “USB” .

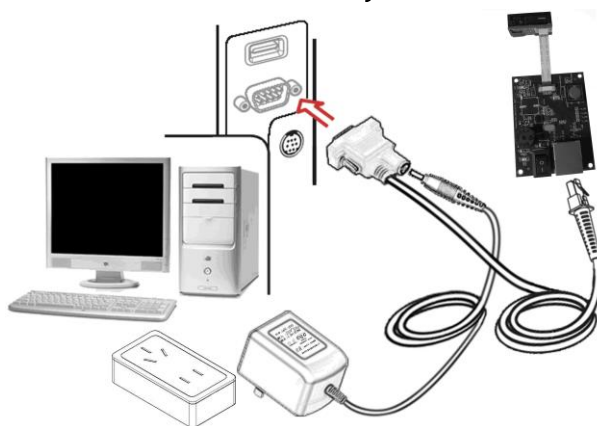
Step 5: Click “Browse” button, choose the file (format of *.bin) to download.

Step 6: Click “Upgrade” button, start the firmware upgrading process.

Step 7: After successfully upgrading, “Update success.” will be displayed, and the color of lamp of the Flash Utility.exe will change from gray to green. If the upgrading process is not successful, the color of lamp will change from gray to red, please refer to the error message displayed.

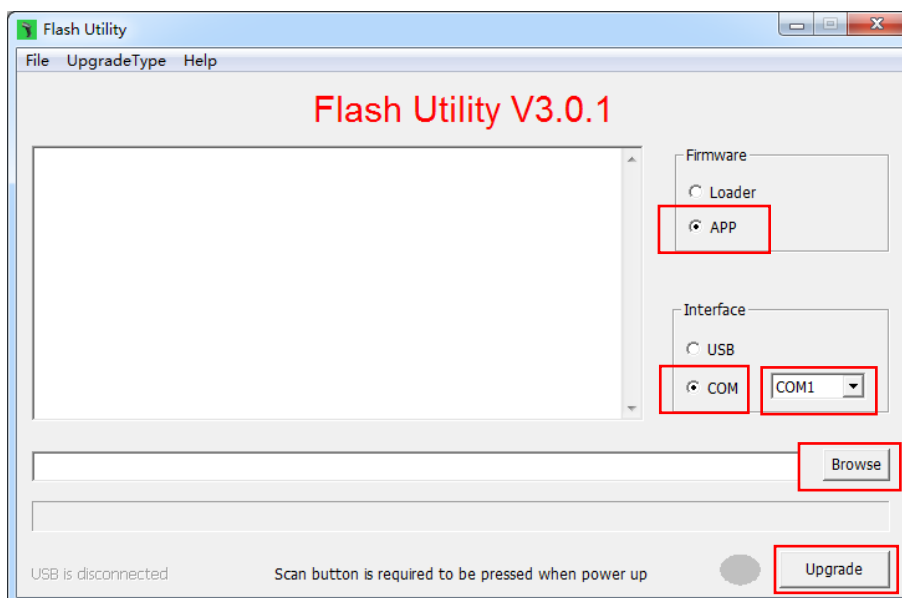
4-2 Steps to upgrade firmware by RS232 cable

Step 1: Connect the engine test board to the PC host by RS232 cable. As shown below.



Step 2: Keep the scan button being pressed, and power on the engine test board. The scan engine will beep once and the green LED of the engine test board will turn on to indicate entering on the firmware upgrade status, and then release the scan button.

Step 3: Run the Flash Utility.exe, as shown below.



Step 4: [Firmware] choose “APP” , [Interface] choose “COM” , and select appropriate serial port.

Step 5: Click “Browse” button, choose the file (format of *.bin) to download.

Step 6: Click “Upgrade” button, start the firmware upgrading process.

Step 7: After successfully upgrading, “Update success.” will be displayed, and the color of lamp of the Flash Utility.exe will change from gray to green. If the upgrading process is not successful, the color of lamp will change from gray to red, please refer to the error message displayed.

5 Afterwards



%%%DEF

WARNING: Default value initialization

If you wish to return the scanner to all the factory default settings, scan the barcode above.



%%%VER

Firmware version list

If you wish to display the firmware version of scanner, scan the barcode above.

-END-