

# MINDEO

## Remote Scanner Management II (RSM II V1.1.1)

### User Manual



Version: RSM\_II\_V1.1.1\_UM\_EN

## Index

- 0. Typographical conventions
- 1. Run RSM II
- 2. Set cradle to upgrade ready mode
- 3. Set handheld unit to upgrade ready mode
- 4. Set Protocol
- 5. Upgrade Cradle
- 6. Upgrade Handheld Unit
- 7. Cradle exiting from upgrade ready mode & firmware version display
- 8. Handheld unit exiting from upgrade ready mode & firmware version display
- Appendix A: Parts of the scanner

## 0. Typographical conventions

The following typographical conventions are used in this manual.

Typographical conventions	Indication
<i>Typewriter italic</i>	Denotes arguments to commands and function where the argument is to be replaced by a specific value.
*	Denotes any characters in a file name, such as software versions.
<b>bold</b>	Highlights interface elements, such as menu names.
<b>“OK”</b>	Highlights button names.
<b>modality</b>	Highlights dialog box names.

## 1. Run RSM II

Double click RSM II V1.1.1.exe.

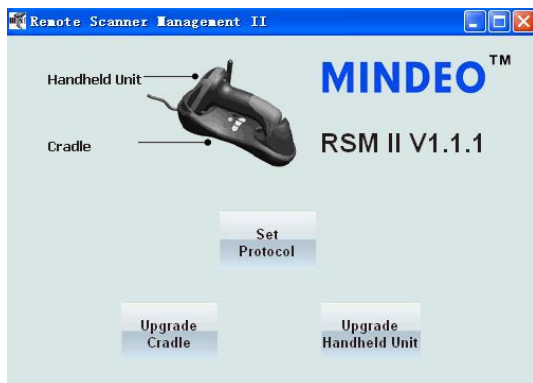



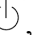
Figure 1 **Remote Scanner Manager II** dialog box

## 2. Set cradle to upgrade ready mode

2.0 Connect the cradle with the host PC, see Appendix A and “CS-II\_series\_QuickGuide”.

2.1 Keep pressing the **S** button on the cradle until the blue LED is flashing, then release the button. After a few seconds, all the three LEDs are turned on indicating that the cradle enters upgrade ready mode.

### 3. Set handheld unit to upgrade ready mode

- 3.1 The handheld unit must be powered off before proceed to the next step. If so, skip this step. Otherwise, switch it off by pressing the power button  for a few seconds. When the beeper beeps, release the button.
- 3.2 Keep pressing the trigger of the handheld unit, then press the power button , after hearing one beep then releases the trigger. The handheld unit is powered on and all three LEDs are turned on to indicate that the handheld unit has successfully entered upgrade ready mode.
- 3.3 Put the handheld unit into the cradle.

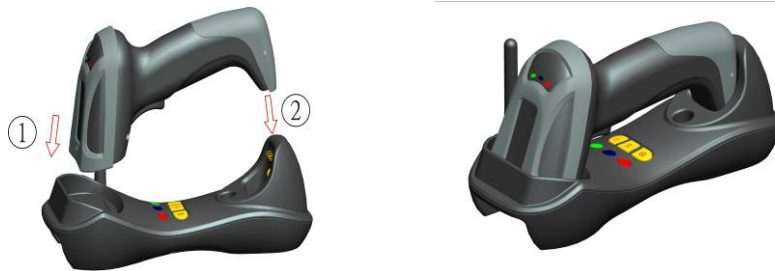


Figure 2 Put the handheld unit into the cradle.

### 4. Set Protocol

- 4.1 Follows the instructions in section 3 to set the cradle to upgrade ready mode.
- 4.2 Click on “**Set Protocol**” on **Remote Scanner Management**.
- 4.3 If the cradle is with USB cable, click on the radio button “USB” on **Set Protocol**, then click on “**OK**”.
- 4.4 Or, if the cradle is with RS232 cable, click on the radio button labeled “RS232” on **Set Protocol**. Choose an appropriate **COM** port and which is connected to PC, and choose an appropriate **Baudrate** subject to communication speed. Then click on “**OK**”.

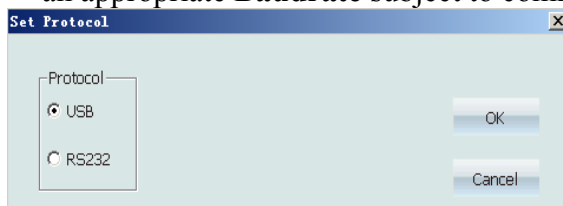


Figure 3 USB option on **Set Protocol**

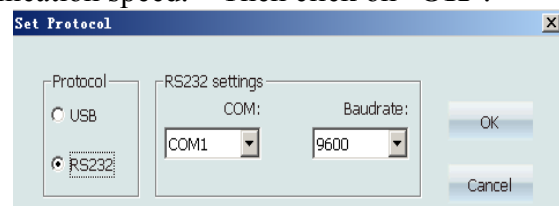


Figure 4 RS232 option on **Set Protocol**

### 5. Upgrade Cradle

- 5.1 Follows the instructions in section 3 and 5 to set the protocol properly and to set the cradle to upgrade ready mode.
- 5.2 Click on “**Upgrade Cradle**” on **Remote Scanner Management II**.
- 5.3 Click on “**Choose**” on **Upgrade Cradle** to choose the data file \*.dat for upgrade.
- 5.4 Click on “**Upgrade**” on **Upgrade Cradle**.
- 5.5 Wait until the upgrade progress bar reaching 100%. Click on “**OK**” to complete the process. Meanwhile the cradle will exit from the upgrade ready mode.

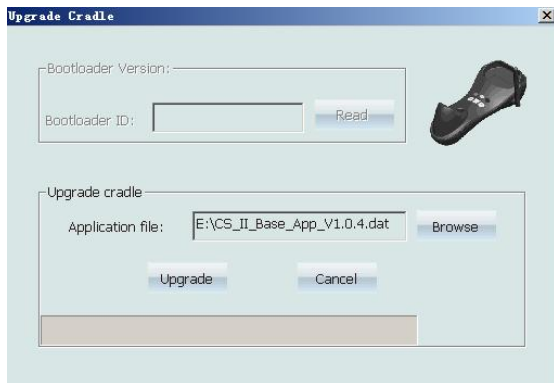


Figure 5 **Upgrade Cradle** dialog box

## 6. Upgrade Handheld Unit

- 6.0 Follows the instructions in section 2, 3 and 4 to set the protocol properly and to set both the cradle and handheld unit to upgrade ready mode.
- 6.1 Click on **“Upgrade Handheld Unit”** on **Remote Scanner Management-II**.
- 6.2 Click on **“Choose”** on **Upgrade Handheld Unit** to choose the data file \*.dat for upgrade.
- 6.3 Click on **“Update”** on **Upgrade Handheld Unit**.
- 6.4 Wait until the upgrade progress bar reaches 100%. Click on **“OK”** to complete the process. Note that meanwhile the handheld unit will exit from upgrade ready mode, but the cradle is still ready for next firmware upgrade operation with another handheld unit.



Figure 6 **Upgrade Handheld Unit** dialog box

## 7. Cradle exiting from upgrade ready mode & firmware version display

- 7.1 To let the cradle to exit from upgrade ready mode, user should keep pressing the **S** button on the cradle until the green LED is flashing, then release the button.
- 7.2 Scan the following barcode to check the current firmware version of the cradle. Be noted that both cradle and handheld unit must be on normal working mode.



**%%BVER**  
Cradle firmware version list


- 7.3 Follows the instructions in section 3 to set the cradle to upgrade ready mode. Scan the following barcodes to return default setting, while the handheld unit is on normal working mode.



**%%BDEF**

**WARNING: Cradle default value initialization**

## 8. Handheld unit exiting from upgrade ready mode & firmware version display

- 8.1 To let the handheld unit to quit from upgrade ready mode, user should keep pressing the power button  at the bottom of handheld unit for 2 seconds to turn off the power. Then switch on it.
- 8.2 Scan the following barcodes to return default setting and check the current firmware version of the **handheld** unit. While both the cradle and the handheld unit are on normal working mode and they are well communicated.



**%%%DEF**

**WARNING: Handheld unit default value initialization**




**%%%VER**

**Handheld unit firmware version list**

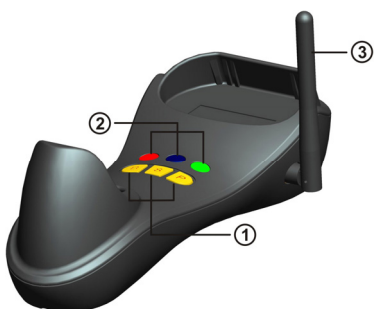
## Appendix A: Parts of the scanner



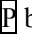
### Handheld unit



- ① Exit window    ② Trigger    ③ Red LED (Charging indicator)  
④ Communication/Charge socket    ⑤ Power button     ⑥ Sound hole  
⑦ Red LED (Not successful transmission); Blue LED (Power); Green LED (Setting)

### Cradle



- ①  button (Reserved);  button (Upgrade / Reset);  button (USB Enumeration)  
② Red LED (Initiation failure); Blue LED (Power); Green LED (Data In indicator)  
③ Antenna